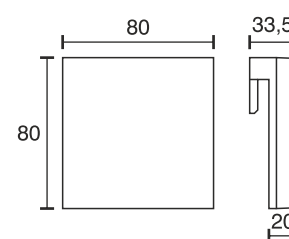
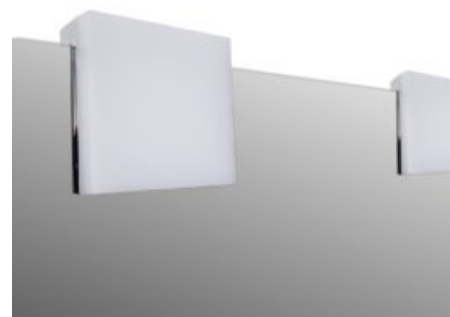


Mirror Light square

Technical specifications	
Input Voltage	12 Volt DC
Wattage	3 Watt
Type	1000 mm mains lead with LED plug-in connection
Dimensions	80 x 80 x 33.5 mm 20 mm mounting dimension on mirror front
Housing colour	bright chrome
Installation	clipped onto the mirror, up to 6 mm width, screw fixing onto wooden shelves
IP Code	IP44
Correlated colour temperature and luminous flux of the light source	4000K 240 Lumen
Lumen maintenance factor	L70B50 >30000 h
CRI	80
EEC	G
Waste disposal	through suitable disposal site
Replaceability	the light source is not replaceable



Article code	CCT
32.983.004nw	4000K